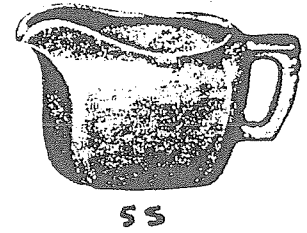


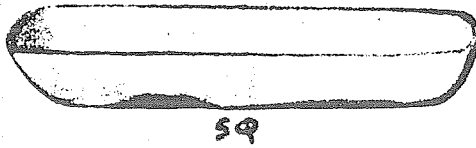
5P



5U



5S



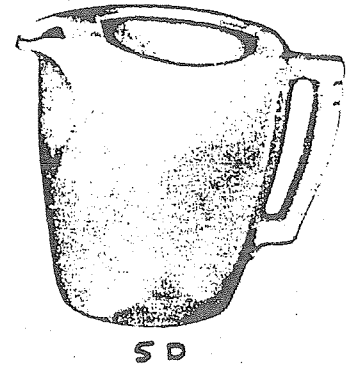
5Q



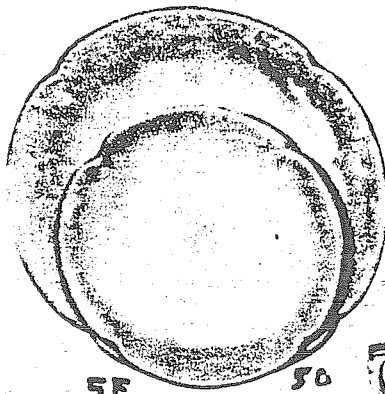
5CL



5M



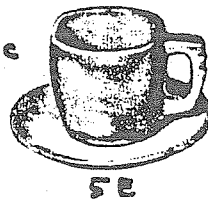
5D



5F

5G

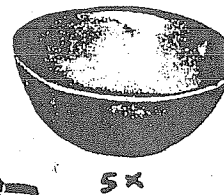
5C



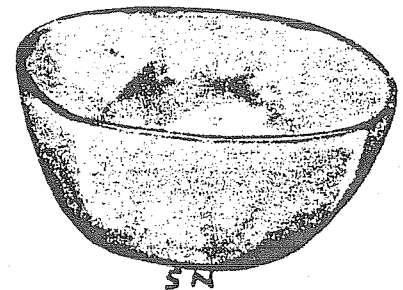
5E



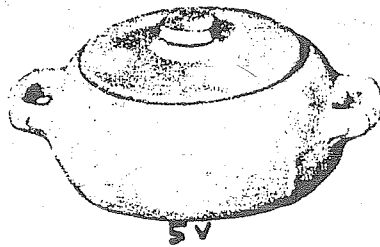
5A



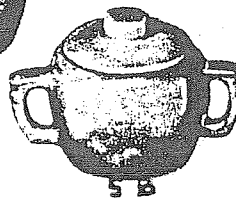
5X



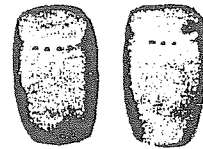
5N



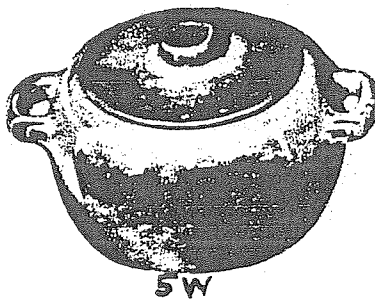
5V



5B



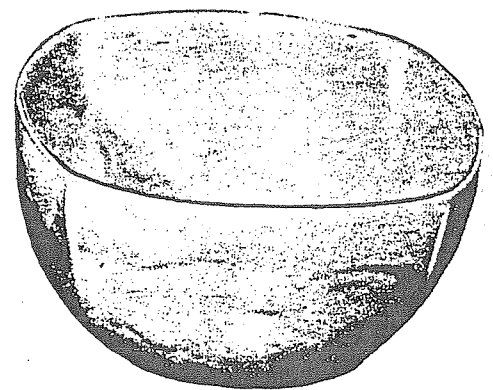
5H



5W



5NS



5NL

5a—16 oz. pitcher	1.00
5b—16 oz. sugar bowl	1.00
5c—7 oz. cup60
5cl—12 oz. mug70
5d—3 qt. pitcher, with ice guard	3.00
5e—plain 6" saucer60
5el—welled 6" saucer60
5f—10 1/2" plate	1.00
5g—8" plate80
5h—large salt and pepper, pair	1.00

5m—16 oz mug80
5n—5 qt. salad bowl	4.00
5ns—2 qt. service bowl	2.00
5nl—9 qt. salad bowl	7.00
5p—16" platter	5.00
5q—13" platter	2.00
5s—28 oz. sauce boat	1.50
5u—16 oz. individual baker	1.00
5v—2 qt. baker	2.00
5w—3 qt. baker	3.50
5x—24 oz. salad, or chili	1.00